

SECTION 36

TOWNSHIP 78 NORTH, RANGE 2 EAST
OF THE FIFTH PRINCIPAL MERIDIAN.

BLUE GRASS TOWNSHIP

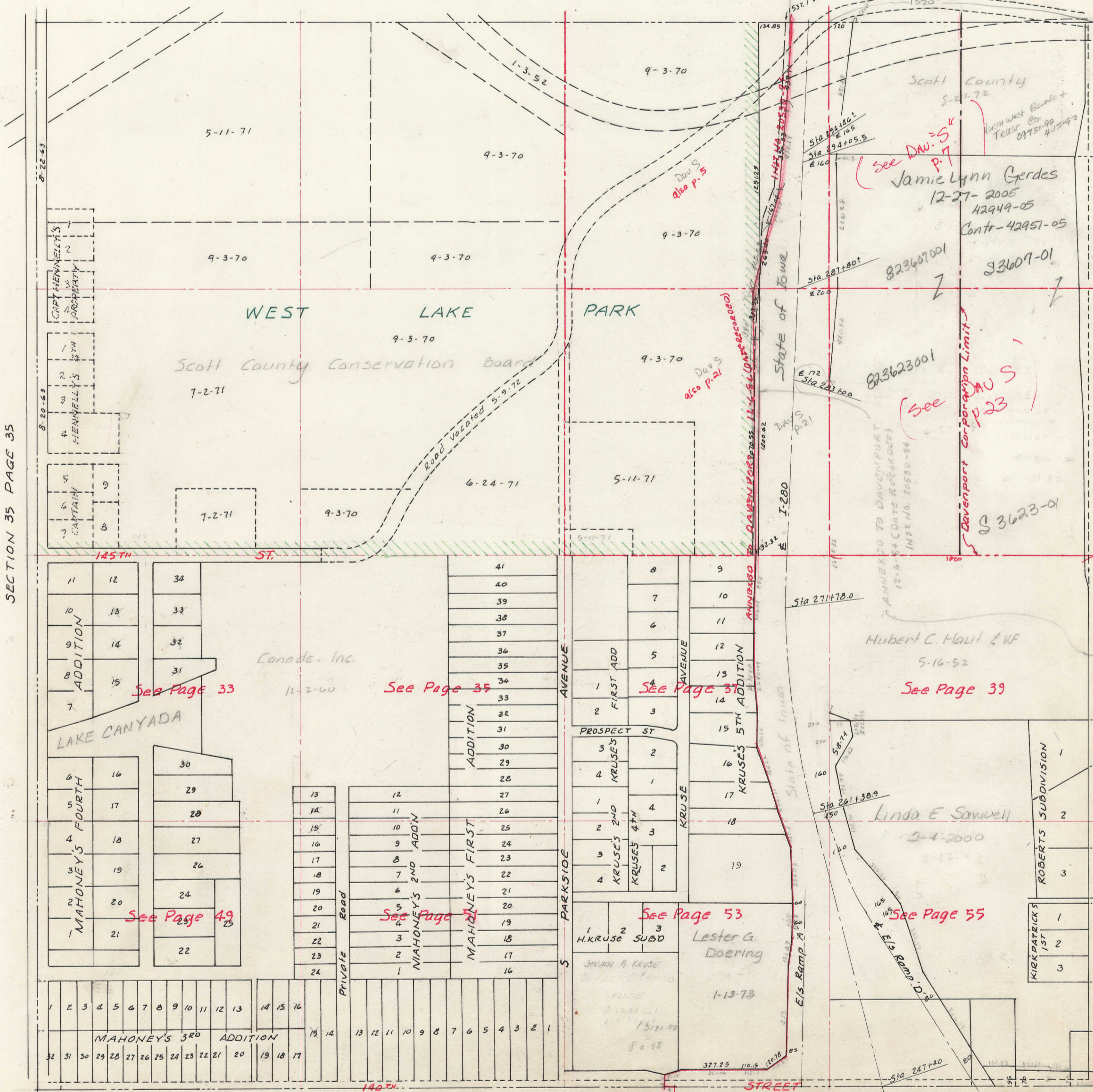
SCOTT COUNTY, IOWA



SCALE: 1 inch = 330 feet

TRANSFER PAGE 67

SECTION 25 PAGE 25



SECTION 35 PAGE 35

SECTION 31-78-3

DAVENPORT VOL 5

33

SECTION 31-78-3

DAVENPORT VOL R-2

49